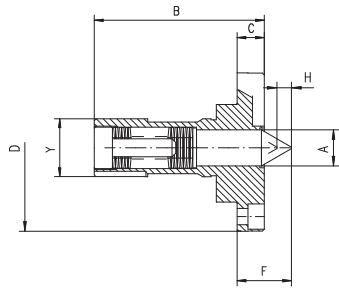


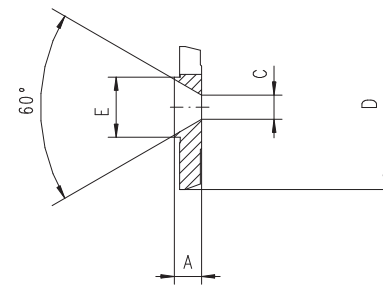
1
2
3
4
5
6



FEDERGELAGERTE ZENTRIERSPITZE
CENTERING INSERT WITH SPRING-LOADED CENTRE

Für Typ • For Type 2488

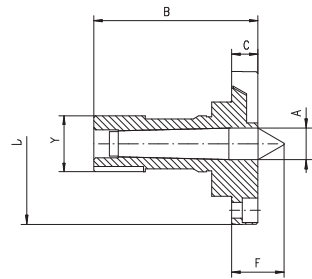
Artikel Nr.	Größe	A	B	C	D K6	F	H	Y h6
Code No.	Size							
● 398524801300	160	17	90	12	70	28	6	32
● 398524802600	200	20	94	15	92	30	9	32
● 398524803900	250	25	105	16	117	35	10	38
● 398524804100	315	29	120	16	134	37	13	48



BEGRENZUNGSPLATTE
FÜR FEDERGELAGERTE ZENTRIERSPITZE
SPRING-LOADED CENTRE STOP

Für Typ • For Type 2488

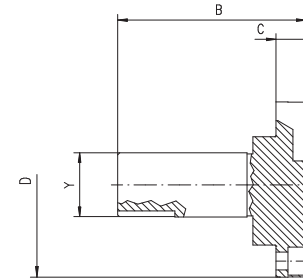
Artikel Nr.	Größe	A	C	D	E
Code No.	Size				
● 398524811500	160	10	8,8	60	18
● 398524812800	200	10	8,8	60	22
● 398524813000	250	13	14	70	28
● 398524814300	315	13	14	80	33



FESTE ZENTRIERSPITZE
CENTERING INSERT WITH FIXED CENTRE

Für Typ • For Type 2488

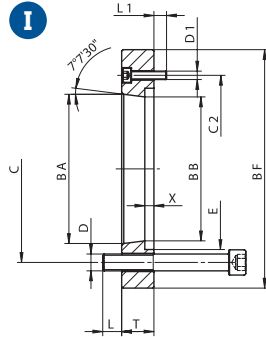
Artikel Nr.	Größe	A	B	C	D K6	F	Y h6
Code No.	Size						
● 398524821700	160	18	90	12	70	28	32
● 398524822000	200	18	94	15	92,2	30	32
● 398524823200	250	24	105	16	117	35	38
● 398524824500	315	31,6	120	16	134	37	48



ZENTRIEREINSATZ
CENTERING INSERT

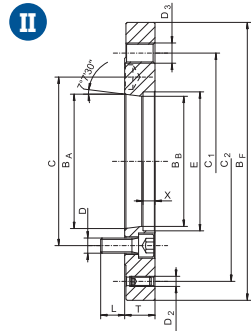
Für Typ • For Type 2488

Artikel Nr.	Größe	B	C	D k6	Y h6
Code No.	Size				
● 398524831900	160	90	12	70	32
● 398524832100	200	94	15	92	32
● 398524833400	250	105	16	117	38
● 398524834700	315	120	16	134	48



Für Typ • For Type
2105; 2105-K; 2605; 2605-K

ADAPTER FLANSCH
ADAPTER PLATE



Artikel Nr.	Typ	Z*	Größe	Spindelnase**	B F	B A	B B	C	C 1	C 2	D	D 1	D 2	D 3	L	L 1	T	E	X	kg
Code No.	Type		Size	Spindle nose**																
● 358213085900	8213-160-5 2-4	I	160	A5	140	82,563	79,5	104,8	-	116	4xM10	3xM6	-	-	13,5	8	20	100	3,0	1,6
● 358213537000	8213-200-6 2-4	I	200	A6	170	106,375	103	133,4	-	150	4xM12	3xM6	-	-	13,5	7	23	117	6,5	2,6
● 358213555800	8213-250-8 2-4	I	250	A8	220	139,719	136	171,4	-	190	4xM16	3xM8	-	-	23,0	11	35	149	7,5	6,0
● 358213238000	8213-315-8 2-4	I	315	A8	220	139,719	136	171,4	-	190	4xM16	3xM8	-	-	20,0	11	37	165	4,0	6,8
● 358213656100	8213-400-8 2-4	II	400	A8	300	139,719	142	171,4	235,0	235	6xM16	-	3xM10	6xM20	21,5	-	41	202	11	16,52
● 358213263100	8213-400-11 2-4	I	400	A11	300	196,869	192,8	235,0	-	260	4xM20	3xM10	-	-	34	13	44	198	11	16,29
● 358213655900	8213-500-11 2-4	II	500	A11	380	196,869	192,8	235,0	330,2	330,2	6xM20	-	3xM16	8xM24	29	-	55	274	18	26,35
● 358213265700	8213-500-15 2-4	I	500	A15	380	281,4	285,775	330,2	-	330,2	8xM24	3xM12	-	-	29	15	46	246	-	25,64

*Flansch Ausführung • Adapter version **DIN 55026