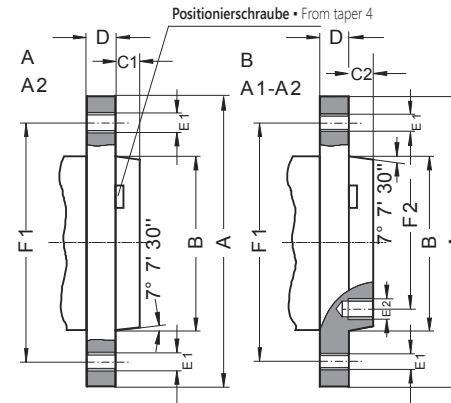


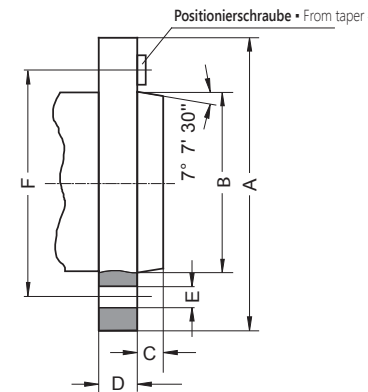
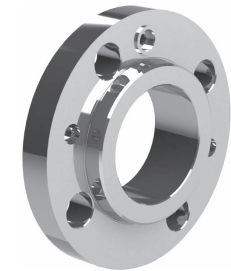
Spindelgröße Spindle nose size	A	B max.	C1	C2	D	E1 (DIN)	E1 (ISO)	F1	E2 (DIN)	E2 (ISO)	F2
3	92	53,983	11	-	16	3xM10	-	70,6	-	-	-
4	108	63,521	11	-	20	11xM10	-	82,6	-	-	-
5	133	82,573	13	14,288	22	11xM10	-	104,8	8xM10	-	61,9
6	165	106,385	14	15,875	25	11xM12	-	133,4	8xM12	-	82,6
8	210	139,731	16	17,462	28	11xM16	-	171,4	8xM16	-	111,1
11	280	196,883	18	19,050	35	11xM20	11xM18	235,0	8xM20	8xM18	165,1
15	380	285,791	19	20,638	42	12xM24	12xM22	330,2	11xM24	11xM22	247,6
20	520	412,795	21	22,225	48	12xM24	-	463,6	11xM24	-	368,3
28	725	584,248	24	25,400	56	12xM30	-	647,6	11xM30	-	530,2


DIN 55026 - TYP A, TYP B / TYPE A2, TYPE B
ISO 702/I - TYP A2, TYP A1-A2 / TYPE A2, TYPE A1-A2

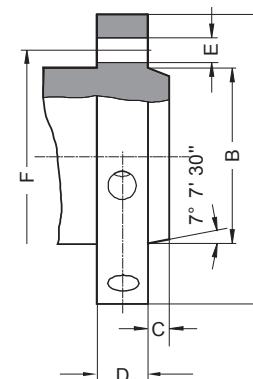
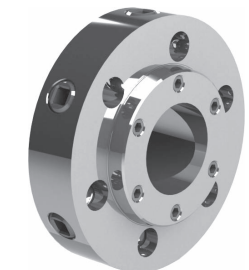
- Typ A: Gewindelöcher im Flansch (äußerer Lochkreis) ohne inneren Lochkreis
- Typ B: Gewindelöcher im Flansch (äußerer Lochkreis) und im inneren Lochkreis
- Maße in Klammern entsprechen ISO 702/I
- Type A: Tapped holes in flange (outer bolt circle) without inner bolt circle
- Type B: Tapped holes in flange (outer bolt circle) and in inner bolt circle
- Dimensions in brackets according to ISO 702/I



Spindelgröße Spindle nose size	A	B max.	C	D	E	F
3	102	53,983	11	16	3x21	75,0
4	112	63,521	11	20	3x21	85,0
5	135	82,573	13	22	4x21	104,8
6	170	106,385	14	25	4x23	133,4
8	220	139,731	16	28	4x29	171,4
11	290	196,883	18	35	6x36	235,0
15	400	285,791	19	42	6x43	330,2
20	540	412,795	21	48	6x43	463,6

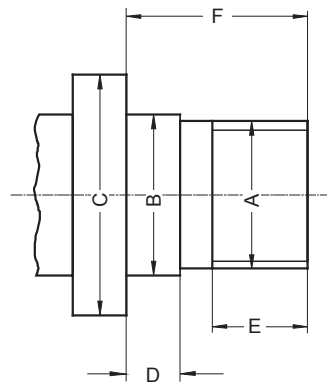
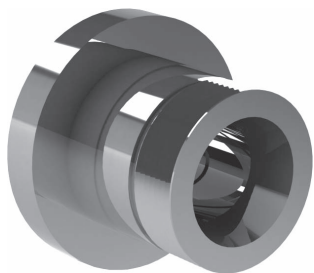

DIN 55027, ISO 702/III - TYP C / TYPE C
MIT BAYONETT-SCHEIBE
WITH BAYONET MOUNT RING


Spindelgröße Spindle nose size	A	B max.	C	D	E	F
3	92	53,983	11	32	3x15,1	70,6
4	117	63,521	11	34	3x16,7	82,6
5	146	82,573	13	38	6x19,8	104,8
6	181	106,385	14	45	6x23,0	133,4
8	225	139,731	16	50	6x26,2	171,4
11	298	196,883	18	60	6x31,0	235,0
15	403	285,791	19	70	6x35,7	330,2
20	546	412,795	21	82	6x42,1	463,6


DIN 55029, ISO 702/II - TYP D / TYPE D
CAMLOCK


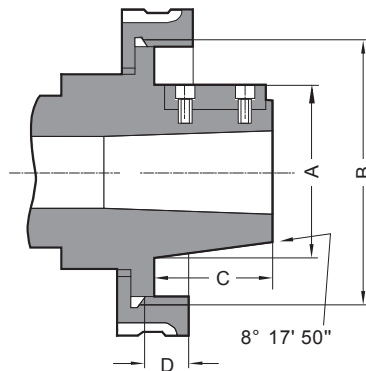
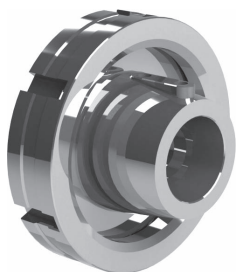
- 1
- 2
- 3
- 4
- 5
- 6

DIN 800 MIT GEWINDE
DIN 800 WITH THREAD



A	B g5	C min.	D	E	F
M 20	21	30	6,3	10	20
M 24	25	36	8,0	12	24
M 33	34	50	9,0	14	30
M 39	40	56	10,0	16	35
M 45	46	67	11,0	18	40
M 52	55	80	12,0	20	45
M 60	62	90	14,0	22	50
M 76x6	78	112	16,0	30	63
M 105x6	106	150	20,0	40	80

TYP L - LANGKEGEL 7:24
TYPE L - LONG TAPER 7:24



Spindelgröße Spindle nose size	A +0.051	B	C	D	Mitnehmer Driving block
	L00	69.850	3 3/4-6 UNS	50.800	14.288
L0	82.550	4 1/2-6 UNS	60.325	15.875	9.525x44.45
L1	104.775	6-6 UNS	73.025	19.050	15.875x60.32
L2	133.350	7 3/4-5 UNS	85.725	25.400	19.050x73.02
L3	165.100	10 3/8-4 UNS	94.425	28.575	25.400x82.55