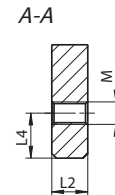
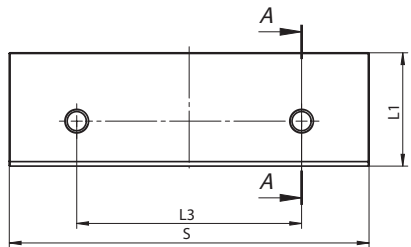


- Einseitig, glatt, gehärtet und geschliffen
- One sided, smooth, hardened and ground

SPANNBACKEN-EINSÄTZE
CLAMPING INSERTS FOR MACHINE VISES

Artikel Nr. Code No.	S	L1	L2	L3	L4	L5	D	D1	Für Typ For Type
● 398263110800	100	32	13,5	70	14	10,3	9	15	6512, 6530, 6537
● 398263120000	125	40	16,6	85	17	13,2	11	18	6512, 6530, 6531, 6537
● 398263130100	160	50	16,6	110	20	13,2	11	18	6512, 6515, 6516, 6522, 6530, 6531, 6537
● 398263140300	200	63	21,0	140	28	16,0	14	20	6512, 6515, 6516, 6522, 6531, 6537
● 398260595500	125	42	16,6	89	18	13,2	11	18	6515, 6516

2-pc/satz • 2-pc/set

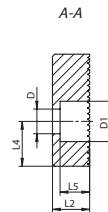
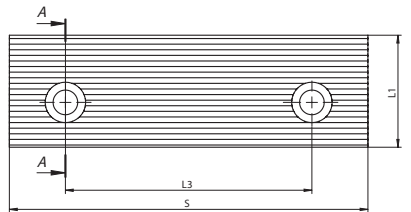


- Zweiseitig, glatt, gehärtet und geschliffen
- Two sided, smooth, hardened and ground

SPANNBACKEN-EINSÄTZE
CLAMPING INSERTS FOR MACHINE VISES

Artikel Nr. Code No.	S	L1	L2	L3	L4	M	Für Typ For Type
● 398263170900	125	40,4	12,5	80	16	M10	6517, 6518
● 398263180000	160	50,4	16,0	100	20	M10	6517, 6518
● 398263190200	200	63,0	20,0	125	25	M12	6517, 6518

2-pc/satz • 2-pc/set

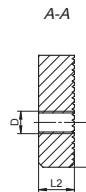
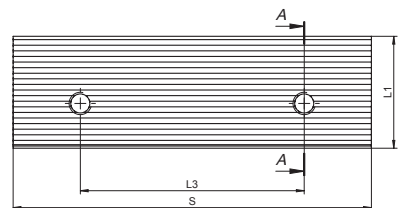
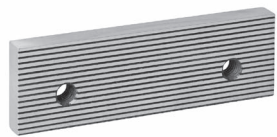


- Einseitig, 1 Seite geriffelt, 1 Seite glatt, gehärtet und geschliffen
- One sided, one side grooved, one side smooth, hardened and ground

SPANNBACKEN-EINSÄTZE
CLAMPING INSERTS FOR MACHINE VISES

Artikel Nr. Code No.	S	L1	L2	L3	L4	L5	D	D1	Für Typ For Type
● 398263210900	100	32	13,5	70	14	10,3	9	15	6512, 6530, 6537
● 398263220000	125	40	16,6	85	17	13,2	11	18	6512, 6530, 6531, 6537
● 398263230200	160	50	16,6	110	20	13,2	11	18	6512, 6515, 6516, 6522, 6530, 6531, 6537
● 398263240400	200	63	21,0	140	28	16,0	14	20	6512, 6515, 6516, 6522, 6531, 6537
● 398260596800	125	42	16,6	89	18	13,2	11	18	6515, 6516

2-pc/satz • 2-pc/set



- Zweiseitig, 1 Seite geriffelt, 1 Seite glatt, gehärtet und geschliffen
- Two sided, one side grooved, one side smooth, hardened and ground

SPANNBACKEN-EINSÄTZE
CLAMPING INSERTS FOR MACHINE VISES

Artikel Nr. Code No.	S	L1	L2	L3	L4	D	Für Typ For Type
● 398263270000	125	40	12,5	80	16	M10	6517, 6518
● 398263280100	160	50	16,0	100	20	M10	6517, 6518
● 398263290300	200	63	20,0	125	25	M12	6517, 6518

2-pc/satz • 2-pc/set