

1

2

3

4

5

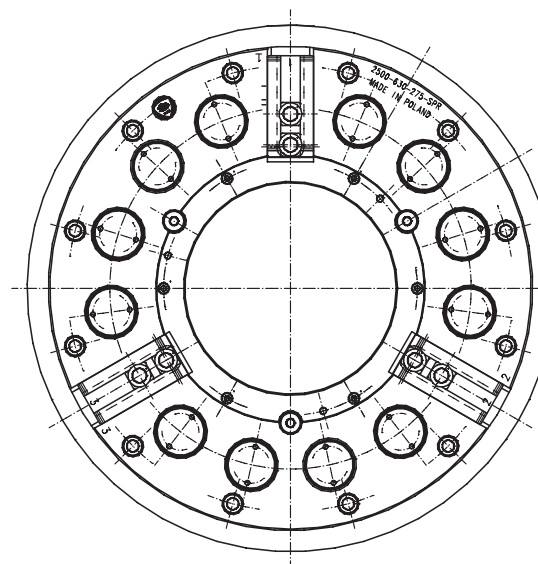
6



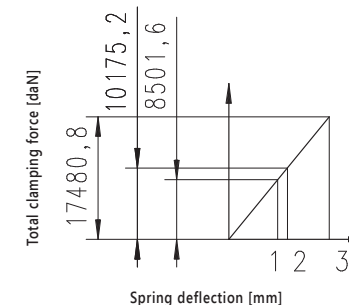
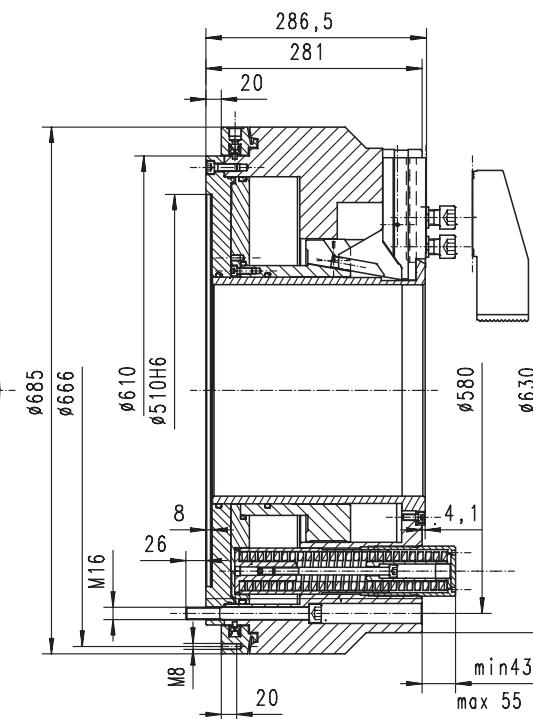
2500-SPR



- The power chucks with an integrated pneumatic cylinder (spring-loaded) are mainly designed for clamping of tubes or other similar shaped workpieces
- The workpiece is clamped with 12 spring packs and unclamped through a pneumatic cylinder mounted inside the chuck
- Air pressure safety control distributor in the clamping chamber
- Large through-hole suitable for machining of tubes up to 275mm diameter
- Made of high quality alloy steel
- Working surfaces of all parts are hardened and ground
- Master jaws lubricated directly
- Rapid idle and slow clamping stroke
- Inside clamping
- Unbalance G 6.3



* All dimensions on the drawing are in [mm]



- 1 - Initial spring tension
- 2 - Upper bound of the clamping range
- 3 - Lower bound of the clamping range

2500-SPR

Code No.	Type	Max. speed [rpm]	Total stroke [mm]	Clamping stroke [mm]	Rapid stroke [mm]	Operating pressure [MPa]	Clamping force [kN]	Total height [mm]	Outer diameter [mm]	Through-hole [mm]	Weight [lbs]	Clamping range [mm]
7-784-2500	2500-630-275-SPR	1.000	25,4	8,6	16,8	min. 0,6; max. 1,0	150	min. 324	630/685	275	1.080,26	104÷300

