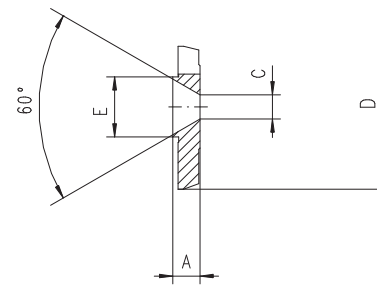


CENTERING INSERT WITH SPRING-LOADED CENTRE

For Type 2488

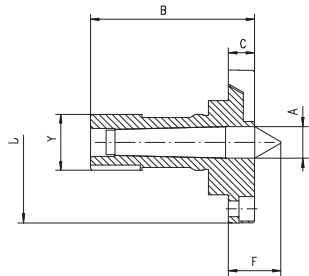
Code No.	Size	A	B	C	D	K6	F	H	Y	h6
		[mm]								
7-791-106	160	17	90	12	70	28	6	32		
7-791-108	200	20	94	15	92	30	9	32		
7-791-110	250	25	105	16	117	35	10	38		
7-791-112	315	29	120	16	134	37	13	48		



SPRING-LOADED CENTRE STOP

For Type 2488

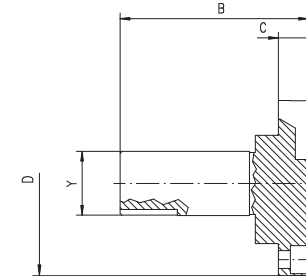
Code No.	Size	A	C	D	E
		[mm]			
7-791-206	160	10	8.8	60	18
7-791-208	200	10	8.8	60	22
7-791-210	250	13	14	70	28
7-791-212	315	13	14	80	33



CENTERING INSERT WITH FIXED CENTRE

For Type 2488

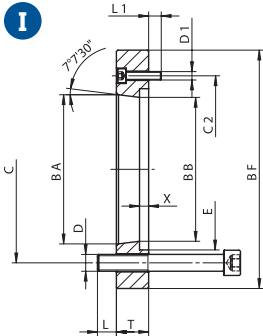
Code No.	Size	A	B	C	D	K6	F	Y	h6
		[mm]							
7-791-306	160	18	90	12	70	28	32		
7-791-308	200	18	94	15	92.2	30	32		
7-791-310	250	24	105	16	117	35	38		
7-791-312	315	31.6	120	16	134	37	48		



CENTERING INSERT

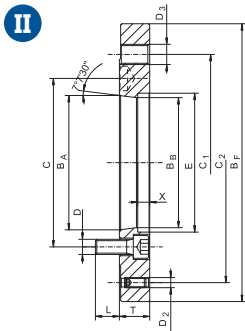
For Type 2488

Code No.	Size	B	C	D	k6	Y	h6
		[mm]					
7-791-406	160	90	12	70	32		
7-791-408	200	94	15	92	32		
7-791-410	250	105	16	117	38		
7-791-412	315	120	16	134	48		



For Type 2105; 2105-K; 2605; 2605-K

ADAPTER PLATES FOR 2- AND 4-JAW CHUCKS



Code No.	Type	Z*	Size [mm]	Spindle nose**	B	F	B	A	B	B	C	C	1	C	2	D	D	1	D	2	D	3	L	L	1	T	E	X	Weight [lbs]
					[mm]																								
7-789-6065	8213-160-5 2-4	I	160	A5	140	82.563	79.5	104.8	-	116	4xM10	3xM6	-	-	-	13.5	8	20	100	3.0	3.53								
7-789-6086	8213-200-6 2-4	I	200	A6	170	106.375	103	133.4	-	150	4xM12	3xM6	-	-	-	13.5	7	23	117	6.5	5.73								
7-789-6108	8213-250-8 2-4	I	250	A8	220	139.719	136	171.4	-	190	4xM16	3xM8	-	-	-	23.0	11	35	149	7.5	13.23								
7-789-6128	8213-315-8 2-4	I	315	A8	220	139.719	136	171.4	-	190	4xM16	3xM8	-	-	-	20.0	11	37	165	4.0	14.99								
7-789-6168	8213-400-8 2-4	II	400	A8	300	139.719	142	171.4	235.0	235	6xM16	-	3xM10	8xM20	21.5	-	41	202	11	36.42									
7-789-61611	8213-400-11 2-4	I	400	A11	300	196.869	192.8	235.0	-	260	4xM20	3xM10	-	-	-	34	13	44	198	11	35.91								
7-789-62011	8213-500-11 2-4	II	500	A11	380	196.869	192.8	235.0	330.2	330.2	6xM20	-	3xM16	8xM24	29	-	55	274	18	58.09									
7-789-62015	8213-500-15 2-4	I	500	A15	380	281.4	285.775	330.2	-	330.2	8xM24	3xM12	-	-	-	29	15	46	246	-	56.53								

*Adapter version **DIN 55026