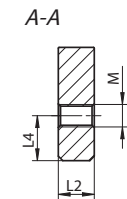
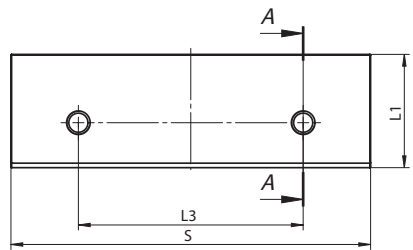


■ One sided, smooth, hardened and ground

CLAMPING INSERTS FOR MACHINE VISES

Code No.	S	L1	L2	L3	L4	L5	D	D1	For Type
	[mm]								
7-290-024	100	32	13.5	70	14	10.3	9	15	6512, 6530, 6537
7-290-025	125	40	16.6	85	17	13.2	11	18	6512, 6530, 6531, 6537
7-290-026	160	50	16.6	110	20	13.2	11	18	6512, 6515, 6516, 6522, 6530, 6531, 6537
7-290-028	200	63	21.0	140	28	16.0	14	20	6512, 6515, 6516, 6522, 6531, 6537
7-290-0240	125	42	16.6	89	18	13.2	11	18	6515, 6516

2-pc/set

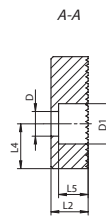
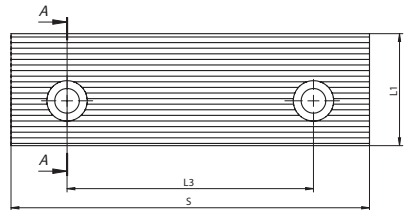


■ Two sided, smooth, hardened and ground

CLAMPING INSERTS FOR MACHINE VISES

Code No.	S	L1	L2	L3	L4	M	For Type
	[mm]						
7-292-024	100	32.4	12.5	63	14	M8	6517, 6518
7-292-025	125	40.4	12.5	80	16	M10	6517, 6518
7-292-026	160	50.4	16.0	100	20	M10	6517, 6518
7-292-028	200	63.0	20.0	125	25	M12	6517, 6518

2-pc/set

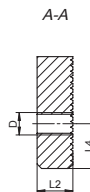
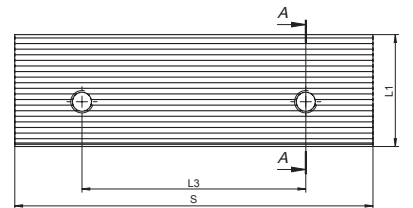


■ One sided, one side grooved, one side smooth, hardened and ground

CLAMPING INSERTS FOR MACHINE VISES

Code No.	S	L1	L2	L3	L4	L5	D	D1	For Type
	[mm]								
7-290-074	100	32	13.5	70	14	10.3	9	15	6512, 6530, 6537
7-290-075	125	40	16.6	85	17	13.2	11	18	6512, 6530, 6531, 6537
7-290-076	160	50	16.6	110	20	13.2	11	18	6512, 6515, 6516, 6522, 6530, 6531, 6537
7-290-078	200	63	21.0	140	28	16.0	14	20	6512, 6515, 6516, 6522, 6531, 6537
7-290-0750	125	42	16.6	89	18	13.2	11	18	6515, 6516

2-pc/set



■ Two sided, one side grooved, one side smooth, hardened and ground

CLAMPING INSERTS FOR MACHINE VISES

Code No.	S	L1	L2	L3	L4	D	For Type
	[mm]						
7-292-074	100	32	12.5	63	14	M8	6517, 6518
7-292-075	125	40	12.5	80	16	M10	6517, 6518
7-292-076	160	50	16.0	100	20	M10	6517, 6518
7-292-078	200	63	20.0	125	25	M12	6517, 6518

2-pc/set