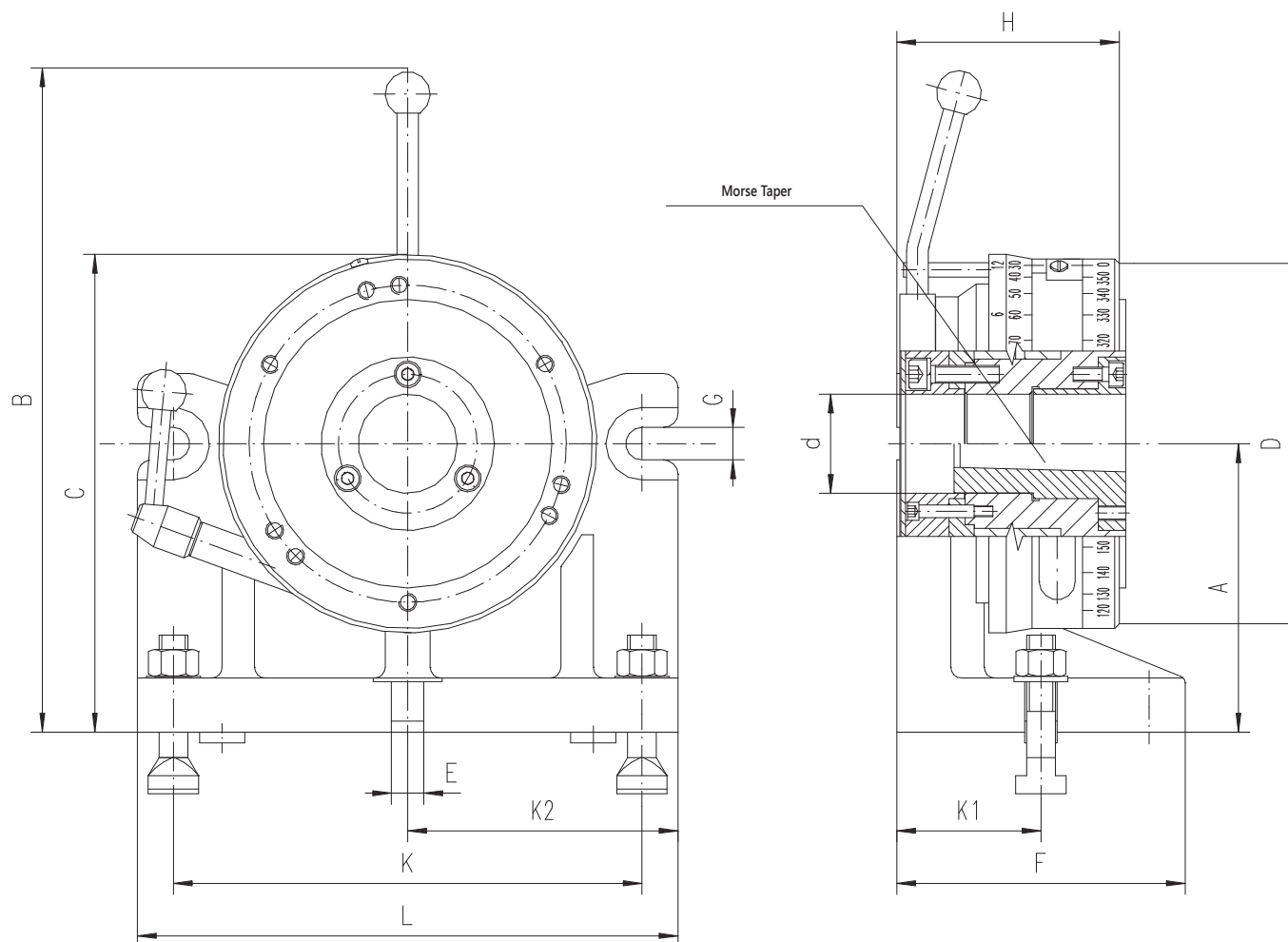
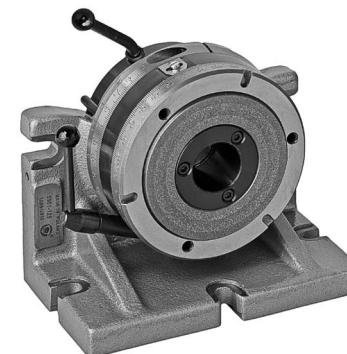


5911



- Simple and compact design provides for three types of indexing:
 - 1) basic indexing - which is done by means of catch device in 2, 3, 4, 6, 8, 12 and 24 divisions
 - 2) angular indexing - which can be performed through sleeve with scale graduated in 360° in 1° increment
 - 3) alternative indexing - which can be performed by means of catch device and specified changeable dividing plate (with Z=13, 14, 15, 16, 17, 18, 19, 20, 21, 22, 23 or 24 units number of divisions). To obtain required number of divisions replace Z=24 plate with one of the above specified plates.
- Indexing accuracy 2'
- True run-out of tapered centre bore 0.02mm
- Squareness (base to chuck) 0.02mm
- Parallelism over face 0.02mm
- Concentricity of mounting flange with precision or standard chuck 0.03÷0.06mm
- Dividing plate made of high quality alloy steel, hardened and ground
- Body made of cast iron
- Chuck not included

Please select an appropriate chuck:			
Solid jaws	2-piece jaws		Page
3274 (7-811-...)	3275 (7-812-...)	3-jaw, cast iron body	33
3574 (7-817-...)	3575 (7-813-...)	3-jaw, steel body	32
3674 (7-815-...)	3675 (7-814-...)	4-jaw, cast iron body	45
3774 (7-844-...)	3775 (7-814-...)	4-jaw, steel body	44

Code No. (no chuck)	Code No. (with chuck)*	Type	A	B	C	D	d	Morse Taper	E	F	G	H	K	K1	K2	L	Permissible weight of workpieces				Weight [lbs]
																	with chuck		without chuck		
			without support	with support	without support	with support															
			[mm]								[mm]								[daN]		
7-609-020	7-609-010	5911-200	200	469	330	250	76	4	18	180	18	139.5	300	90	170	340	40	80	70	110	134.5
7-609-022	7-609-012	5911-250	250	555	411	315	103	5	18	200	18	157.5	360	100	200	400	50	90	95	135	235.9

A - For tailstock D - For chuck * - 7-812-... chuck included