

1

2

3

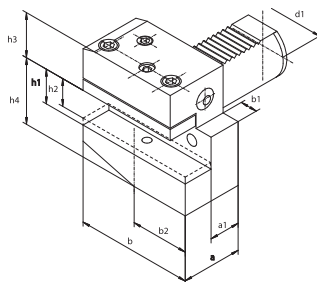
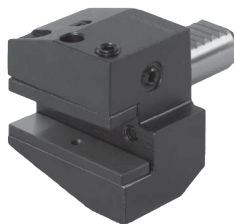
4

5

6

### 1114P

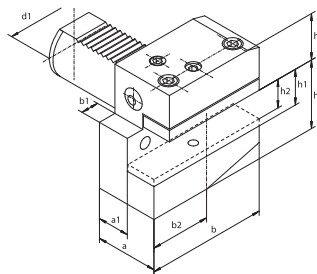
- Radial Toolholder, right-hand, short
- External coolant supply



Code No.	Type	DIN 69880	d1	a	a1	b	b1	b2	h1	h2	h3	h4
			[mm]									
7-355-103P	1114-16P	B1-16 x 12 x 24	16	24	13	42	5.0	23.0	12	10	20.0	22
7-355-103P-L	1114-16P-L	B1-16 x 12 x 34	16	34	23	42	5.0	23.0	12	10	20.0	22
7-355-203P	1114-20P	B1-20 x 16 x 30	20	30	16	55	7.0	30.0	16	12	25.0	30
7-355-203P-L	1114-20P-L	B1-20 x 16 x 40	20	40	26	55	7.0	30.0	16	12	25.0	30
7-355-253P	1114-25P	B1-25 x 16 x 30	25	30	16	55	7.0	30.0	16	12	25.0	30
7-355-253P-L	1114-25P-L	B1-25 x 16 x 40	25	40	26	55	7.0	30.0	16	12	25.0	30
7-355-303P	1114-30P	B1-30 x 20 x 40	30	40	22	70	10.0	35.0	20	16	28.0	38
7-355-303P-L	1114-30P-L	B1-30 x 20 x 60	30	60	42	70	10.0	35.0	20	16	28.0	38
7-355-403P	1114-40P	B1-40 x 25 x 44	40	44	22	85	12.5	42.5	25	20	32.5	48
7-355-503P	1114-50P	B1-50 x 32 x 55	50	55	30	100	16.0	50.0	32	25	35.0	60

### 1114L

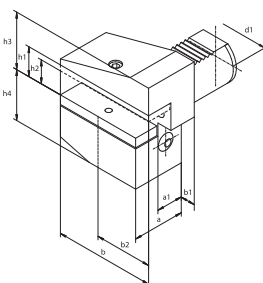
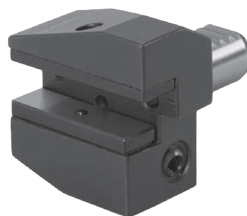
- Radial Toolholder, left-hand, short
- External coolant supply



Code No.	Type	DIN 69880	d1	a	a1	b	b1	b2	h1	h2	h3	h4
			[mm]									
7-355-103L	1114-16L	B2-16 x 12 x 24	16	24	13	42	5.0	23.0	12	10	20.0	22
7-355-103L-L	1114-16L-L	B2-16 x 12 x 34	16	34	23	42	5.0	23.0	12	10	20.0	22
7-355-203L	1114-20L	B2-20 x 16 x 30	20	30	16	55	7.0	30.0	16	12	25.0	30
7-355-203L-L	1114-20L-L	B2-20 x 16 x 40	20	40	26	55	7.0	30.0	16	12	25.0	30
7-355-253L	1114-25L	B2-25 x 16 x 30	25	30	16	55	7.0	30.0	16	12	25.0	30
7-355-253L-L	1114-25L-L	B2-25 x 16 x 40	25	40	26	55	7.0	30.0	16	12	25.0	30
7-355-303L	1114-30L	B2-30 x 20 x 40	30	40	22	70	10.0	35.0	20	16	28.0	38
7-355-303L-L	1114-30L-L	B2-30 x 20 x 60	30	60	42	70	10.0	35.0	20	16	28.0	38
7-355-403L	1114-40L	B2-40 x 25 x 44	40	44	22	85	12.5	42.5	25	20	32.5	48
7-355-503L	1114-50L	B2-50 x 32 x 55	50	55	30	100	16.0	50.0	32	25	35.0	60

### 1115P

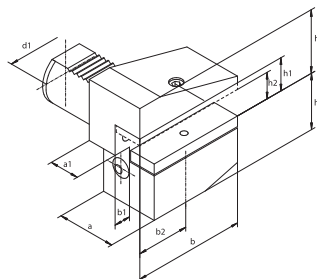
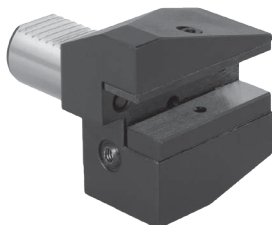
- Radial Toolholder, right-hand inverted, short
- External coolant supply



Code No.	Type	DIN 69880	d1	a	a1	b	b1	b2	h1	h2	h3	h4
			[mm]									
7-356-104P	1115-16P	B3-16 x 12 x 24	16	24	13	42	5.0	23.0	12	10	22	20.0
7-356-104P-L	1115-16P-L	B3-16 x 12 x 34	16	34	23	42	5.0	23.0	12	10	22	20.0
7-356-204P	1115-20P	B3-20 x 16 x 30	20	30	16	55	7.0	30.0	16	12	30	25.0
7-356-204P-L	1115-20P-L	B3-20 x 16 x 40	20	40	26	55	7.0	30.0	16	12	30	25.0
7-356-254P	1115-25P	B3-25 x 16 x 30	25	30	16	55	7.0	30.0	16	12	30	25.0
7-356-254P-L	1115-25P-L	B3-25 x 16 x 40	25	40	26	55	7.0	30.0	16	12	30	25.0
7-356-304P	1115-30P	B3-30 x 20 x 40	30	40	22	70	10.0	35.0	20	16	38	35.0
7-356-304P-L	1115-30P-L	B3-30 x 20 x 60	30	60	42	70	10.0	35.0	20	16	38	35.0
7-356-404P	1115-40P	B3-40 x 25 x 44	40	44	22	85	12.5	42.5	25	20	48	42.5
7-356-504P	1115-50P	B3-50 x 32 x 55	50	55	30	100	16.0	50.0	32	25	60	50.0

### 1115L

- Radial Toolholder, left-hand inverted, short
- External coolant supply



Code No.	Type	DIN 69880	d1	a	a1	b	b1	b4	h1	h2	h3	h4
			[mm]									
7-356-104L	1115-16L	B4-16 x 12 x 24	16	24	13	42	5.0	23.0	12	10	22	20.0
7-356-104L-L	1115-16L-L	B4-16 x 12 x 34	16	34	23	42	5.0	23.0	12	10	22	20.0
7-356-204L	1115-20L	B4-20 x 16 x 30	20	30	16	55	7.0	30.0	16	12	30	25.0
7-356-204L-L	1115-20L-L	B4-20 x 16 x 40	20	40	26	55	7.0	30.0	16	12	30	25.0
7-356-254L	1115-25L	B4-25 x 16 x 30	25	30	16	55	7.0	30.0	16	12	30	25.0
7-356-254L-L	1115-25L-L	B4-25 x 16 x 40	25	40	26	55	7.0	30.0	16	12	30	25.0
7-356-304L	1115-30L	B4-30 x 20 x 40	30	40	22	70	10.0	35.0	20	16	38	35.0
7-356-304L-L	1115-30L-L	B4-30 x 20 x 60	30	60	42	70	10.0	35.0	20	16	38	35.0
7-356-404L	1115-40L	B4-40 x 25 x 44	40	44	22	85	12.5	42.5	25	20	48	42.5
7-356-504L	1115-50L	B4-50 x 32 x 55	50	55	30	100	16.0	50.0	32	24	60	50.0