



3244



Standard accessories



1 Set of hard solid ID jaws



1 Set of hard solid OD jaws

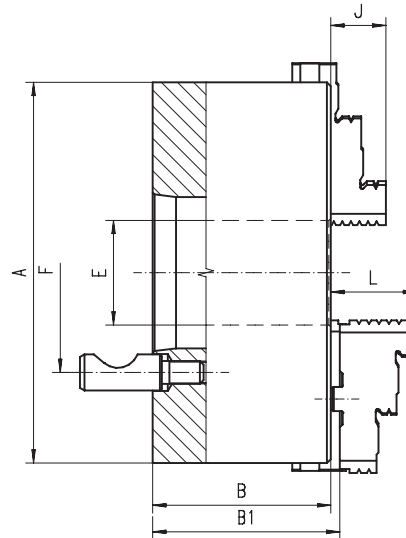


1 Wrench

Spare parts 99-141

Technical data 142-148

Code No.	Type
7-809-0433	3244-4"-3
7-809-0533	3244-5"-3
7-809-0534	3244-5"-4
7-809-0633	3244-6"-3
7-809-0634	3244-6"-4
7-809-0635	3244-6"-5
7-809-0833	3244-8"-3
7-809-0834	3244-8"-4
7-809-0835	3244-8"-5
7-809-0836	3244-8"-6
7-809-1035	3244-10"-5
7-809-1036	3244-10"-6
7-809-1038	3244-10"-8
7-809-1236	3244-12"-6
7-809-1238	3244-12"-8
7-809-1239	3244-12"-11
7-809-1636	3244-16"-6
7-809-1638	3244-16"-8
7-809-1639	3244-16"-11
7-809-2038	3244-20"-8
7-809-2039	3244-20"-11
7-809-2539	3244-25"-11
7-809-2540	3244-25"-15



■ Ground working surfaces

A [in]	Taper Size	B [in]	B1 [in]	E [in]	F [in]	No. of Stud bolts	J [in]	L [in]	Weight [lbs]
3.94	3	3.15	-	0.79	2.78	3	0.63	-	6.61
4.92	3	2.76	2.94	1.26	2.78	3	0.79	1.57	11.02
4.92	4	2.76	2.94	1.26	3.25	3	0.79	1.57	11.02
6.30	3	3.21	3.40	1.65	2.78	3	1.26	1.69	19.84
6.30	4	3.21	3.40	1.65	3.25	3	1.26	1.69	19.84
6.30	5	3.21	3.40	1.65	4.13	6	1.26	1.69	19.84
6.30	3	3.21	3.40	1.65	2.78	3	1.26	1.69	19.84
7.87	4	3.58	3.77	2.03	3.25	3	1.14	1.77	41.89
7.87	5	3.58	3.77	2.17	4.13	6	1.14	1.77	41.89
7.87	6	3.58	3.77	2.17	5.25	6	1.14	1.77	41.89
7.87	5	3.58	3.77	2.17	4.13	6	1.14	1.77	41.89
9.84	6	4.07	4.22	2.99	5.25	6	1.34	2.09	70.55
9.84	8	4.07	4.22	2.99	6.75	6	1.34	2.09	70.55
12.40	6	4.63	4.83	4.06	5.25	6	1.69	2.24	112.44
12.40	8	4.63	4.83	4.06	6.75	6	1.69	2.24	112.44
12.40	11	4.92	5.12	4.06	9.25	6	1.69	2.24	112.44
15.75	6	5.06	5.41	4.06	5.25	6	2.17	2.64	222.67
15.75	8	5.06	5.41	5.35	6.75	6	2.17	2.64	222.67
15.75	11	5.06	5.41	5.35	9.25	6	2.17	2.64	222.67
19.69	8	5.75	6.17	5.35	6.75	6	2.36	3.11	330.69
19.69	11	5.75	6.17	7.48	9.25	6	2.36	3.11	330.69
24.80	11	6.50	6.94	7.48	9.25	6	2.76	3.43	604.07
24.80	15	6.50	6.94	9.92	13.00	6	2.76	3.43	604.07

Large diameters available on page 82-93!

3245



Standard accessories



1 Set of hard top jaws



1 Set of hard master jaws



1 Wrench

Spare parts 99-141

Technical data 142-148

Type	Code No.
-	-
3245-5"-3	7-803-0533
3245-5"-4	7-803-0534
3245-6"-3	7-803-0633
3245-6"-4	7-803-0634
3245-6"-5	7-803-0635
3245-8"-3	7-803-0833
3245-8"-4	7-803-0834
3245-8"-5	7-803-0835
3245-8"-6	7-803-0836
3245-10"-5	7-803-1035
3245-10"-6	7-803-1036
3245-10"-8	7-803-1038
3245-12"-6	7-803-1236
3245-12"-8	7-803-1238
3245-12"-11	7-803-1239
3245-16"-6	7-803-1636
3245-16"-8	7-803-1638
3245-16"-11	7-803-1639
3245-20"-8	7-803-2038
3245-20"-11	7-803-2039
3245-25"-11	7-803-2539
3245-25"-15	7-803-2540