

- 1
- 2
- 3
- 4
- 5
- 6



## 3744



**Standard accessories**



1 Set of hard solid ID jaws



1 Set of hard solid OD jaws

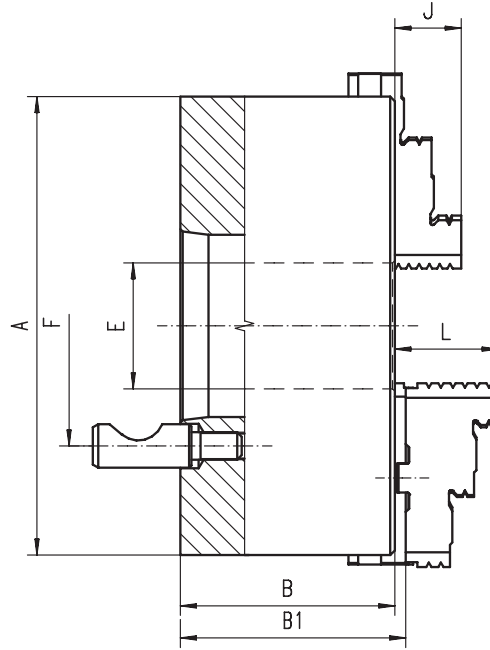


1 Wrench

Spare parts 99-141

Technical data 142-148

Code No.	Type
7-835-05332	3744-5"-3
7-835-05342	3744-5"-4
7-835-06332	3744-6"-3
7-835-06342	3744-6"-4
7-835-06352	3744-6"-5
7-835-08342	3744-8"-4
7-835-08352	3744-8"-5
7-835-08362	3744-8"-6
7-835-10362	3744-10"-6
7-835-10382	3744-10"-8
7-835-12362	3744-12"-6
7-835-12382	3744-12"-8
7-835-16382	3744-16"-8
7-835-16392	3744-16"-11
7-835-20382	3744-20"-8
7-835-20392	3744-20"-11
7-835-25392	3744-25"-11
7-835-25352	3744-25"-15



- Hardened and ground working surfaces
- Balanced scroll plate

A [in]	Taper Size	B [in]	B1 [in]	E [in]	F [in]	No. of Stud bolts	J [in]	L [in]	Weight [lbs]
4.92	3	2.34	2.55	1.26	2.78	3	0.79	1.57	11.02
4.92	4	2.34	2.55	1.26	3.25	3	0.79	1.57	11.02
6.30	3	2.68	2.87	1.65	2.78	3	1.26	1.69	19.84
6.30	4	2.68	2.87	1.65	3.25	3	1.26	1.69	19.84
6.30	5	2.68	2.87	1.65	4.13	6	1.26	1.69	19.84
7.87	4	3.07	3.26	2.17	3.25	3	1.14	1.77	41.89
7.87	5	3.07	3.26	2.17	4.13	6	1.14	1.77	41.89
7.87	6	3.07	3.26	2.17	5.25	6	1.14	1.77	41.89
9.84	6	3.50	3.65	2.99	5.25	6	1.34	2.09	70.55
9.84	8	3.50	3.65	2.99	6.75	6	1.34	2.09	70.55
12.40	6	3.79	3.99	4.06	5.25	6	1.69	2.24	112.44
12.40	8	3.79	3.99	4.06	6.75	6	1.69	2.24	112.44
15.75	8	4.25	4.60	5.35	6.75	6	2.17	2.64	222.67
15.75	11	4.25	4.60	5.35	9.25	6	2.17	2.64	222.67
19.69	8	4.69	5.11	5.35	6.75	6	2.36	3.11	330.69
19.69	11	4.69	5.11	7.48	9.25	6	2.36	3.11	330.69
24.80	11	5.08	5.52	7.48	9.25	6	2.76	3.43	604.07
24.80	15	5.08	5.52	9.92	13.00	6	2.76	3.43	604.07

Larger diameters available on page 82-93!

## 3745



**Standard accessories**



1 Set of hard top jaws



1 Set of hard master jaws



1 Wrench

Spare parts 99-141

Technical data 142-148

Type	Code No.
3745-5"-3	7-835-0533
3745-5"-4	7-835-0534
3745-6"-3	7-835-0633
3745-6"-4	7-835-0634
3745-6"-5	7-835-0635
3745-8"-4	7-835-0834
3745-8"-5	7-835-0835
3745-8"-6	7-835-0836
3745-10"-6	7-835-1036
3745-10"-8	7-835-1038
3745-12"-6	7-835-1236
3745-12"-8	7-835-1238
3745-16"-8	7-835-1638
3745-16"-11	7-835-1639
3745-20"-8	7-835-2038
3745-20"-11	7-835-2039
3745-25"-11	7-835-2539
3745-25"-15	7-835-2535