

1

2

3

4

5

6

**3960**

Standard accessories

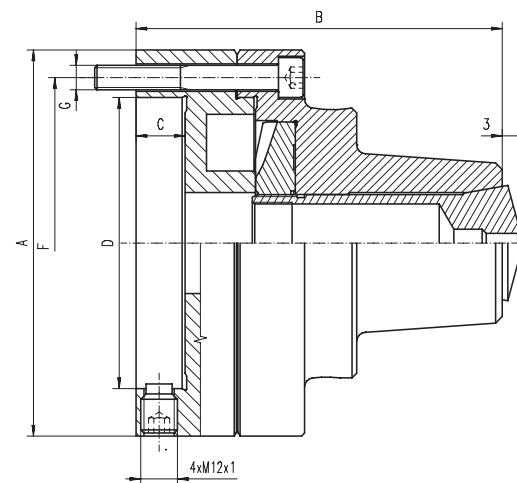


1 Wrench + 1 Hex key

Spare parts 99-141

Technical data 142-148

- High precision 5C collet chuck
- SET-TRU mounting
- The wrench operated scroll provides for uniform and distortion free clamping of workpieces while simultaneously allowing for a fast collet exchange
- Designed for use with 5C collets (385E) and can be used for turning, facing, boring, grinding and milling operations
- Allows for fine adjustment to the required concentricity by means of 4 radially arranged adjusting screws
- Collet 5C not included



| Code No. | Type | A [in] | B [in] | C [in] | D [in] | F [in] | G | RPM | Weight [lbs] |
|------------|---------|--------|--------|--------|--------|--------|------|------|--------------|
| 7-862-0505 | 3960-5C | 4.96 | 4.61 | 0.59 | 2.17 | 4.25 | 3xM8 | 6000 | 11.9 |

**3965**

Standard accessories

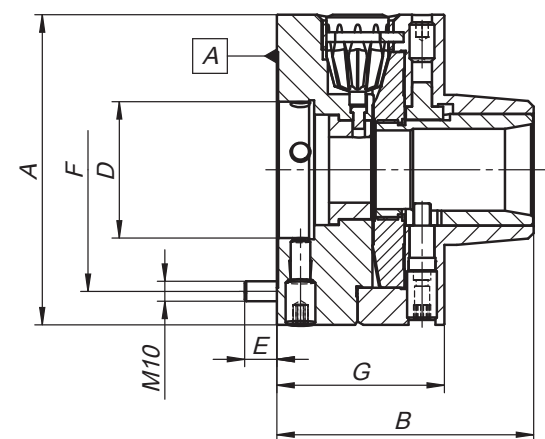


1 Wrench + 1 Hex key

Spare parts 99-141

Technical data 142-148

- High precision 5C collet chuck
- TRU-LENGTH - fixed collet position
- SET-TRU mounting
- The wrench operated scroll provides for uniform and distortion free clamping of workpieces while simultaneously allowing for a fast collet exchange
- Designed for use with 16C collets and can be used for turning, facing, boring, grinding and milling operations
- Allows for fine adjustment to the required concentricity by means of 4 radially arranged adjusting screws
- Collet 16C not included



| Code No. | Type | A [in] | B [in] | D [in] | E [in] | F [in] | G [in] | RPM | Weight [lbs] |
|------------|-------------|--------|--------|--------|--------|--------|--------|------|--------------|
| 7-862-0605 | 3965-6"-16C | 6.30 | 5.06 | 3.39 | 0.67 | 5.51 | 3.11 | 6000 | 24 |