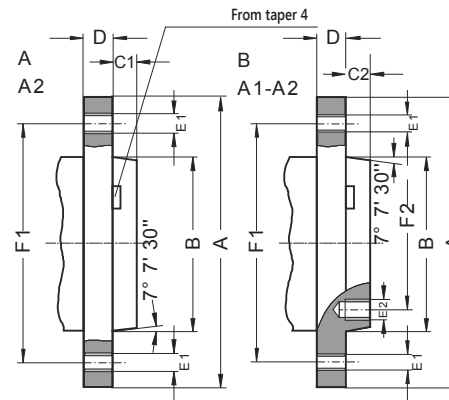


Spindle nose size	A [in]	B max. [in]	C1 [in]	C2 [in]	D [in]	E1 (DIN)	E1 (ISO)	E1 (UNC-3B)	F1 [in]	E2 (DIN)	E2 (ISO)	E2 (UNC-3B)	F2 [in]
3	3.62	2.13	0.43	-	0.6	3xM10	-	7/16-14	2.78	-	-	7/16-14	-
4	4.25	2.50	0.43	-	0.8	11xM10	-	7/16-14	3.25	-	-	7/16-14	-
5	5.24	3.25	0.51	0.56	0.9	11xM10	-	7/16-14	4.13	8xM10	-	7/16-14	2.44
6	6.50	4.19	0.55	0.63	1.0	11xM12	-	1/2-13	5.25	8xM12	-	1/2-13	3.25
8	8.27	5.50	0.63	0.69	1.1	11xM16	-	5/8-11	6.75	8xM16	-	5/8-11	4.37
11	11.02	7.75	0.71	0.75	1.4	11xM20	11xM18	3/4-10	9.25	8xM20	8xM18	3/4-10	6.50
15	14.96	11.25	0.75	0.81	1.7	12xM24	12xM22	7/8-9	13.00	11xM24	11xM22	7/8-9	9.75
20	20.47	16.25	0.83	0.88	1.9	12xM24	-	1-8	18.25	11xM24	-	1-8	14.50
28	28.54	23.00	0.94	1.00	2.2	12xM30	-	1 1/4-7	25.50	11xM30	-	1 1/4-7	20.87

Our chucks meet all of the requirements of ASA Standard B5.9-1960



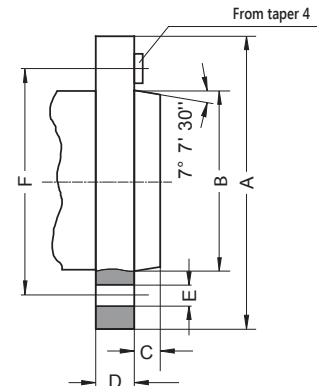
**DIN 55026 - TYPE A, TYPE B  
ASA B5.9-1960 - TYPE A2, TYPE A1-A2**

- Type A: Tapped holes in flange (outer bolt circle) without inner bolt circle
- Type B: Tapped holes in flange (outer bolt circle) and in inner bolt circle
- Dimensions in brackets according to ISO 702/1



Spindle nose size	A [in]	B max. [in]	C [in]	D [in]	E [mm]	F [in]
3	4.02	2.13	0.43	0.63	3 x 21	2.95
4	4.41	2.50	0.43	0.79	3 x 21	3.35
5	5.31	3.25	0.51	0.87	4 x 21	4.13
6	6.69	4.19	0.55	0.98	4 x 23	5.25
8	8.66	5.50	0.63	1.10	4 x 29	6.75
11	11.42	7.75	0.71	1.38	6 x 36	9.25
15	15.75	11.25	0.75	1.65	6 x 43	13.00
20	21.26	16.25	0.83	1.89	6 x 43	18.25

Our chucks meet all of the requirements of ASA Standard B5.9-1960

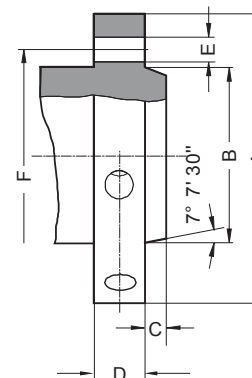


**DIN 55027, ISO 702/III - TYPE C  
WITH BAYONET MOUNT RING**

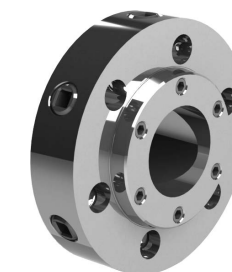


Spindle nose size	A [in]	B max. [in]	C [in]	D [in]	E	F [in]
3	3.62	2.13	0.43	1.26	3 x 0.59	2.78
4	4.61	2.50	0.43	1.34	3 x 0.66	3.25
5	5.75	3.25	0.51	1.50	6 x 0.78	4.13
6	7.13	4.19	0.55	1.77	6 x 0.91	5.25
8	8.86	5.50	0.63	1.97	6 x 1.03	6.75
11	11.73	7.75	0.71	2.36	6 x 1.22	9.25
15	15.87	11.25	0.75	2.76	6 x 1.41	13.00
20	21.50	16.25	0.83	3.23	6 x 1.66	18.25

Our chucks meet all of the requirements of ASA Standard B5.9-1960



**DIN 55029, ISO 702/II - TYPE D  
CAMLOCK**



1

2

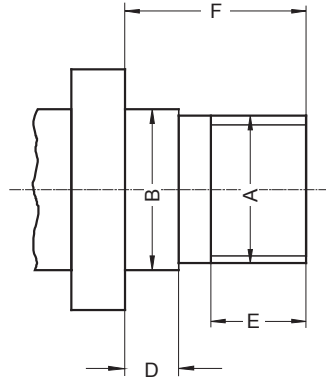
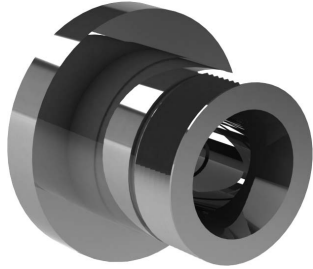
3

4

5

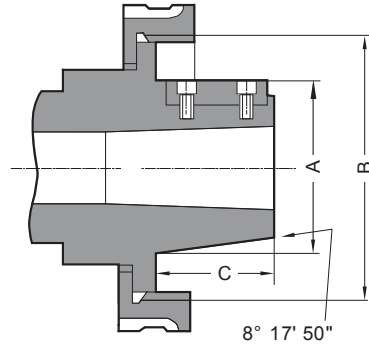
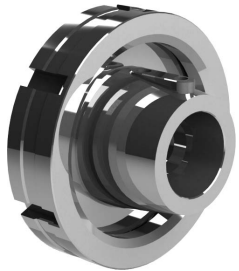
6

**THREAD SPINDLE**



Spindle nose size A	B [in]	D [in]	E [in]	F [in]
1" - 10" UNS-2B	1.0150	1.5000	0.4375	1.0000
1 1/2" - 8" UN-2B	1.5150	1.5000	0.4375	1.0000
2 3/16" - 10" UN-2B	2.2025	1.7500	0.5625	1.1250
2 1/4" - 6" UN-2B	2.2600	1.7500	0.5625	1.1250
2 3/16" - 6" UN-2B	2.2025	1.7500	0.5626	1.1250
2 3/4" - 8" UN-2B	2.7600	2.0625	0.6875	1.3125

**TYPE L - LONG TAPER 7:24**



Spindle nose size	A [in]	B [in]	C [in]	Driving block
L00	2.750	3 3/4" - 6"	2	3/8 x 3/8 x 1 1/2
L0	3.250	4-1/2" - 6"	2-3/8	3/8 x 3/8 x 1 3/4
L1	4.125	6" - 6"	2-7/8	5/8 x 5/8 x 2 3/8
L2	5.250	7-3/4" - 5"	3-3/8	3/4 x 3/4 x 2 7/8
L3	6.500	10-3/8" - 4"	3-7/8	1 x 1 x 3 1/4